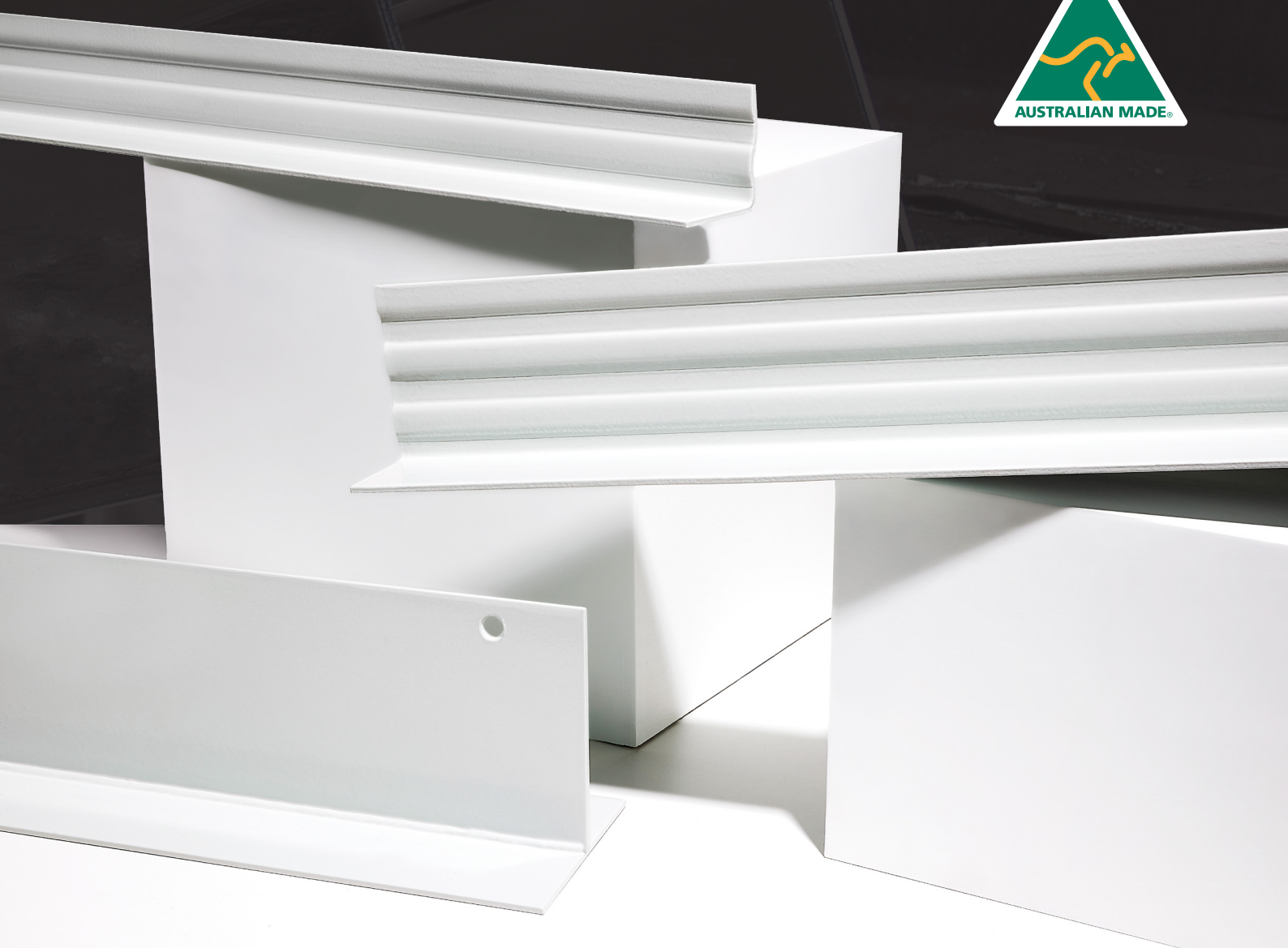


**Galintel<sup>®</sup>**

**STAINLESS STEEL EQUIVALENT**  
**R4 LINTEL RANGE**

**Built For Corrosive Environments**

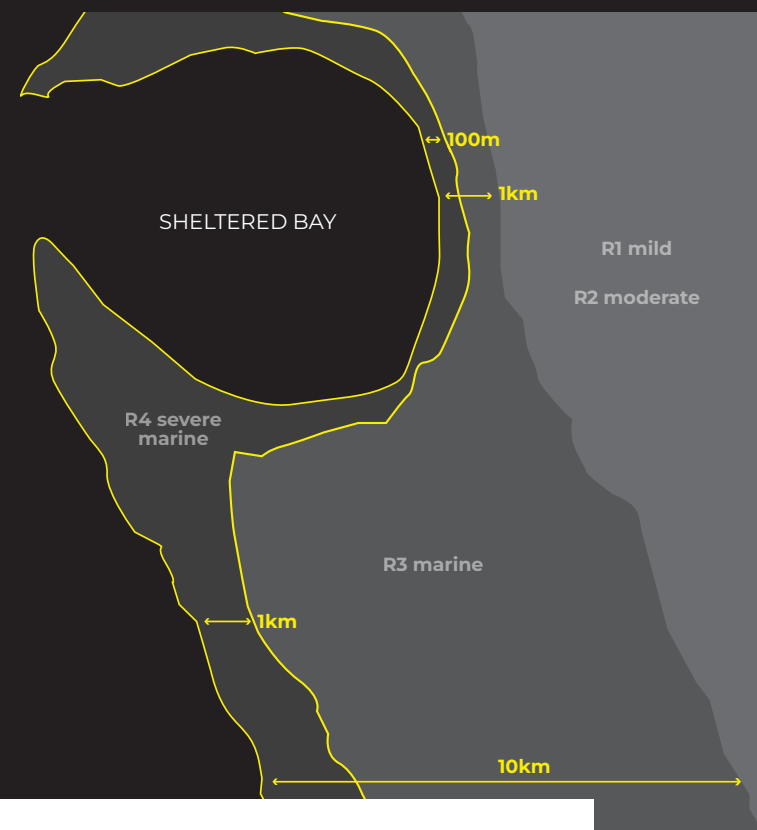


# GALINTEL DUPLEX-COATED R4 STEEL LINTELS ARE BUILT TO RESIST CORROSION IN SEVERE MARINE ENVIRONMENTS.

The protective duplex system consists of an R3 hot-dip galvanised base followed by sweep blast cleaning and a paint coating of high-build epoxy with a final layer of acrylic polyurethane.

Galintel duplex-coated steel lintels are specially suited for placement where the atmospheric corrosivity is categorised as 'C4' or 'C5', which is typically within 1km from a surf coast or 100m from a sheltered bay.

## TYPICAL RELATIONSHIP OF DURABILITY CLASS OF LINTELS TO CORROSIVITY CATEGORY - SIMPLIFIED



### SURF COAST

- C2 > 10km/50km
- C3 1km to 10km/50km
- C4 200m to 1km
- C5 < 200m

### SHELTERED COAST

- C2 > 1km/10km
- C3 50m to 1km/10km
- C4 < 50m
- C5 NA

### KEY

- C Corrosivity category
- R Durability classes
- ↔ Typical distance

As corrosion is affected by more than simply the distance from the sea, the information in this table and on the map should be treated as a guide only and care must be taken to ensure that 'R4' classified lintels are not placed in regions categorised as 'CX' (extreme).

## WHY LINTELS WITH ENHANCED CORROSION RESISTANCE?

1

Even galvanised lintels need extra protection in severe environments such as by the coastline.

2

To comply with the durability requirements of AS 2699.3:2020 (Built-in components for masonry construction), AS 4773.2:2015 (Masonry in small buildings) and AS 3700:2018 (Masonry structures)





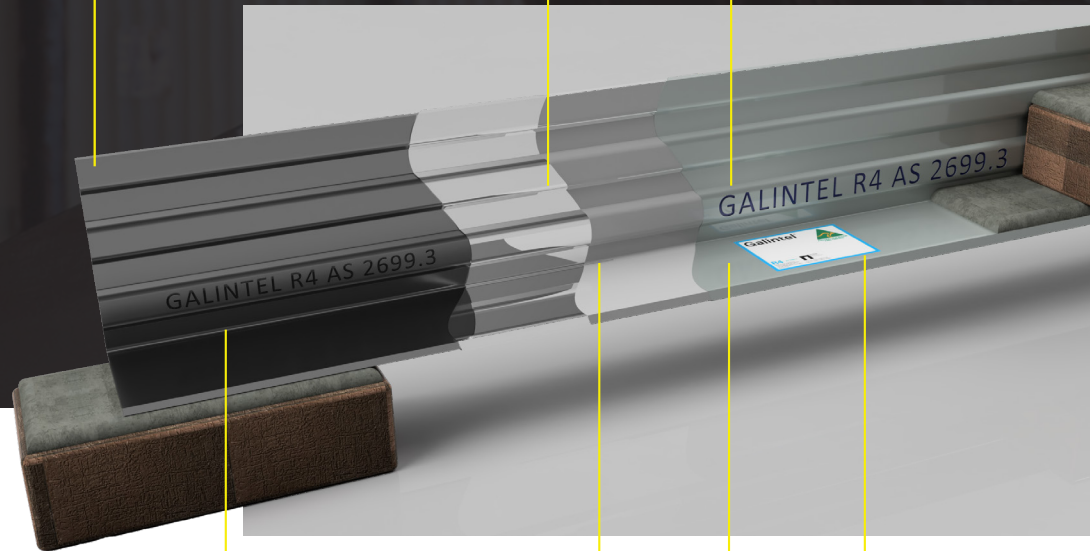
# THE SOLUTION TO CORROSION

■ BlueScope steel

■ HDG coating (min 85 µm)

■ Additional stencilling to ensure jobsite inspection compliance

## SOLID BASE ANGLE



## FEATURES

- Achieves durability class 'R4', covering both 'C4' and 'C5' corrosivity categories for marine exposure.
- Hot-Dip Galvanised to AS/NZS 4680.
- Galvanising overcoated with two protective paint coatings comply with AS 2699.3, durability class 'R4'.
- The R4 duplex coating is equivalent to 316 Stainless Steel - ASTM A240 316L (UNS S31603)
- Entire duplex coating system is factory-applied.
- Stencilling to comply with AS 2699.3 requirements for identification marks to be readily visible after installation.
- Metal stamped before galvanising for permanent identification.
- Labelled & barcoded.
- Compliant with the durability requirements of AS 2699.3:2020 (Built-in components for masonry construction), AS 4773.2:2015 (Masonry in small buildings) and AS 3700:2018 (Masonry structures)
- Australian designed and manufactured.
- Full product warranty\*. See terms and conditions on website.

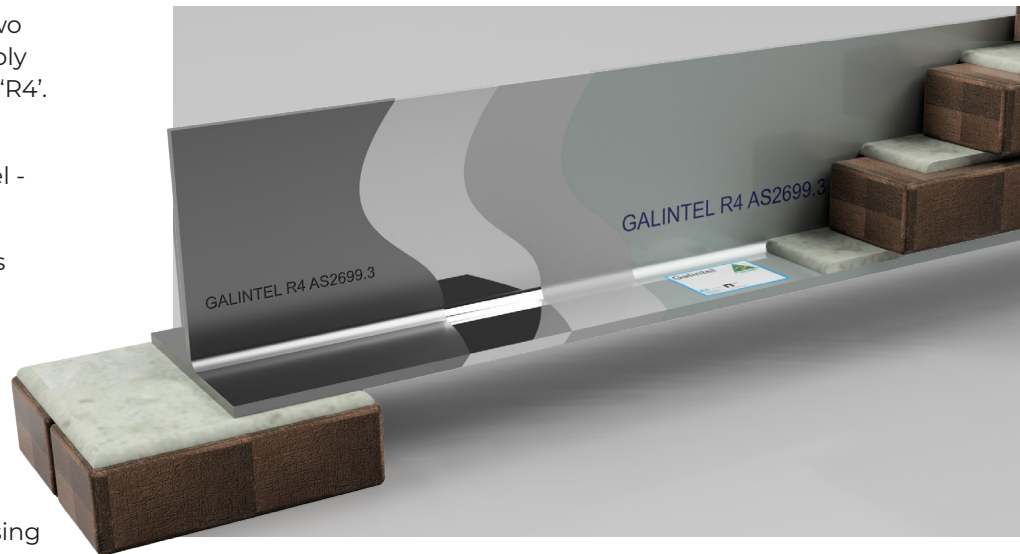
■ Steel stamping to ensure long-term traceability

■ 1 layer 250 µm DFT of epoxy

■ 1 layer 100 µm DFT of polyurethane

■ Colour coded product label

## TRADITIONAL T-BAR



## BENEFITS

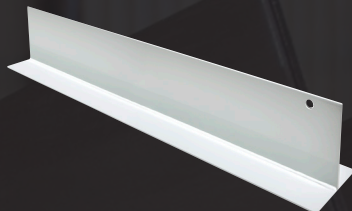
- Ensuring longevity in coastline builds by limiting the effects of corrosion on exposed structural steel lintels.
- Permanently identifiable: steel stamped R4 to ensure lintel is identifiable even if stenciling fades.
- Can match any architectural needs: Can be painted with an overcoat on-site, to colour match the building.

# SIZE AND LENGTH GUIDE



## SOLID BASE ANGLE

100 mm (v) x 100 mm (b) x 6 mm (8.43kg/mtr)	150 mm (v) x 100 mm (b) x 6 mm (10.73kg/mtr)
900	1800
1200	2100
1500	2400
1800	2700
2100	3000
2400	3300
2700	3600
	4000



## TRADITIONAL T-BAR

200/6 mm (v) 200/6 mm (b) (19.33kg/mtr)	200/8 mm (v) x 200/6 mm (b) (23.30kg/mtr)	200/10mm (v) x 200/10mm (b) (31.89kg/mtr)	250/10mm (v) x 200/10mm (b) (35.88kg/mtr)	250/12mm (v) x 200/10mm (b) (39.80kg/mtr)
900	2400	2700	5200	5200
1200	2700	3000	5400	5400
1500	3000	3300	5700	5700
1800	3300	3600	6000	6000
2100	3600	3900	6300	6300
2400	3900	4200		
		4500		
		4800		
		5200		
		5400		
		5700		
		6000		
		6300		

[Note: The weights displayed in the table below are the R3 weights. The R4 coated product will be heavier.]

# Galintel®

## CONNECT WITH US

### Head Office

117-153 Rookwood Road,  
Yagoona NSW 2199

1800 546 835

galintel@nepean.com

www.galintel.com.au

## DISTRIBUTION CENTRES

### New South Wales

20 Millwood Avenue, Narellan NSW 2567

### Queensland

14 Griffin Crescent, Brendale QLD 4500

### Victoria

171 Derrimut Drive, Derrimut VIC 3026

### Manufacturing Facility

45-47 Wingara Drive, Coffs Harbour NSW 2450



Information contained in this brochure is supplied in good faith and with the view to assist the user in the correct selection of our products. Customers are responsible for ensuring that products usage is appropriate, fit for purpose, safe and compliant with relevant Australian Standards and National Construction Code of Australia. While every care is taken to ensure that the information contained in this brochure is correct, no warranty is made nor is any condition expressed or implied. The information contained herein does not constitute an offer nor do we guarantee its accuracy or completeness and assume no responsibility for errors or omissions or for any consequences of reliance on this publication. NEPEAN Building and Infrastructure is committed to continual product improvement and therefore reserves the right to change details and designs without notice. ^ Warranty conditions apply. © Copyright 2024 NEPEAN Building & Infrastructure [ABN 54 125 224 302]. A division of NEPEAN. [06/2024]

The Galintel® brand is proudly owned by

